

Camp Bonaventure

Summer 2023 Registration Guide



Registration
February 8
5:30 PM



Between Friends
connect • grow • belong

TABLE OF CONTENTS

You can find out more about each program and service in each section, or by visiting [our website](#).

4

How to Register

A step-by-step guide to registering for camp

5

Program Fees

How to pay, when to pay, and fee assistance

6

Important Information

Cancellation policy and respect policy

7

About Camp Bonaventure

What is camp? What do campers do at camp?

8

Camp Bonaventure Sites

Overview of our different locations

9

Cost

How much does camp cost?

10

Before and After Care

Extended care outside normal camp hours



Mainline
403 269 9133



info@betweenfriends.ab.ca



Monday - Thursday
9:00 AM - 4:00 PM

TABLE OF CONTENTS

You can find out more about each program and service in each section, or by visiting [our website](#).

11

Camper Support

Ratios, support aides, and supporting your camper

13

FSCD

Information about using FSCD for Camp Bonaventure

14

FAQ

Frequently asked questions about Camp Bonaventure

15

Checklist

A checklist for registration and getting ready for camp

16

Ways You Can Give

How to give back to Between Friends

17

Important Dates

View all the important dates in a calendar



Mainline
403 269 9133



info@betweenfriends.ab.ca



Monday - Thursday
9:00 AM - 4:00 PM

How To Register

Before Registration Night

1 Decide the sessions you want

2 Get your 2023 Membership

3 Test your member login

[Member Portal](#)



**Camp 2023 Registration Night:
Wednesday, February 8, at 5:30 PM**

By Phone



403 508 0110

OR

Have your credit card ready (Visa or Mastercard)

Have your session choices ready

Call the Registration Line - 403 508 0110

- **Do not call the main line**
- **The line will be open 5:30 - 6:30 PM on registration night**

If you are sent to voicemail, **call back** - don't leave a message

- Leaving a voicemail does **not** confirm registration

Online

[Member Portal](#)

Have your credit card ready

- Visa or Mastercard

Have your session choices ready

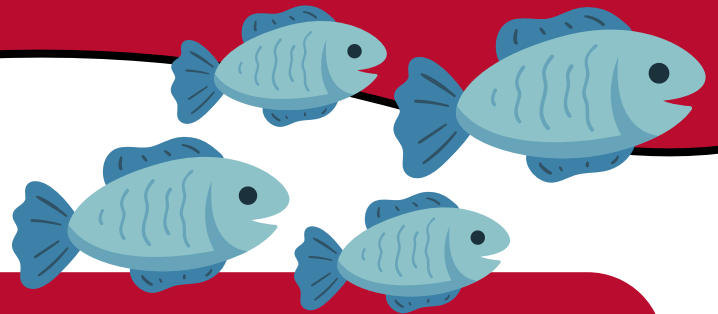
Log in or refresh the page at 5:30 PM

- **Programs will not show up before 5:30 PM**

If you have trouble, **call the Registration Line**

- (403 508 0110)

Program Fees



Paying for Programs

Fees for Between Friends programs are **due at the time of registration**. Credit card, cash, and cheque payments or a fee assistance form must be submitted within **five (5) business days** or registration will be cancelled.

Fee Assistance

Between Friends does its best to make sure that every member who wants to attend programs is given the chance. In order to be accessible, we subsidize all programs for all participants. Additional fee assistance is available for a maximum of:

- 2 Between Friends **Camp Bonaventure** sessions

Once your application is submitted, the Membership Team will review your application and contact you once a fee assistance amount has been calculated. For more information about our Fee Assistance Program or how to apply, please contact the [Membership Team](#).

[Apply for Fee Assistance Here](#)



Mainline
403 269 9133



info@betweenfriends.ab.ca



Monday - Thursday
9:00 AM - 4:00 PM

Important Information

Cancelling Your Program Registration

To cancel registration you must contact info@betweenfriends.ab.ca. A **15% fee** will apply to all cancellations. Refunds will be provided only when vacancies can be filled, and the office is notified of the cancellation.

If a program is canceled due to low registration, you may transfer to another program if space is available, or receive a full refund. We will contact you prior to the start date of the program if cancellation is necessary.



Respect Policy

A safe and welcoming space is a shared community responsibility. We expect our members, parents, guardians, caregivers, and support persons to treat Between Friends personnel and volunteers with respect and dignity.

Behaviors that make anyone feel unwelcome or unsafe will not be tolerated and appropriate steps will be taken to address these behaviors. Between Friends reserves the right to remove anyone not contributing to a safe and welcoming environment from current/future programs and membership.

Thank you for helping us create a community that is inclusive, respectful, safe, and kind.



Main Line
403 269 9133



info@betweenfriends.ab.ca



Monday - Thursday
9:00 AM - 4:00 PM

About Camp Bonaventure

Registration
February 8
5:30 PM

Camp Bonaventure is our summer day camp for youth of all abilities, located in Calgary! A **camp session** is **2 weeks** from **Monday to Friday**. There are many different activities that campers will get to do during their time at camp:

ON-SITE DAYS

Campers spend the day on-site with their team. There will be lots of games, activities, and visits from special guests! These guests include **gardeners**, **magicians**, **yoga instructors**, and more.

OFF-SITE DAYS

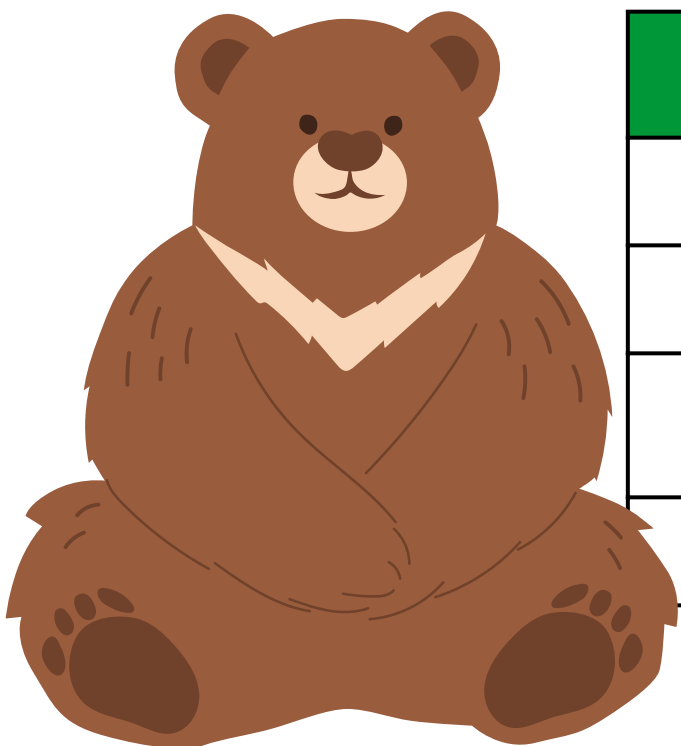
It's a field trip! We'll take a bus ride to places such as **Telus Spark**, the **Corn Maze**, **Bow Habitat**, and more.

SWIM DAYS

Campers will spend the morning on-site with their team playing games and doing activities. After lunch, they'll make their way to a nearby **swimming pool** for a splashing good time!

THEME DAYS

Campers will be on-site taking part in **games and activities** keeping in the theme of this day. Extra points for dressing up in **costume** and getting into character!



Session	Dates
Session 1	July 3 - July 14
Session 2	July 17 - July 28
Session 3	July 31 - August 11 No Camp August 7- Heritage Day
Session 4	August 14 - August 25

There is a maximum registration of two sessions per camper.

Camp Bonaventure Sites



Sandy Beach

1215 50 Avenue SW
Calgary, Alberta

Monday - Friday, 9 AM - 4 PM (Minnows, 10 AM - 3 PM)

Camp Bonaventure Sandy Beach is our main day camp site.

We have our own open-air building (called "The Shelter"), an in-ground trampoline, an accessible garden, and a sensory room!

Ages
4 to 17



Extended Minnows

(9 - 10 AM and 3 - 4 PM)



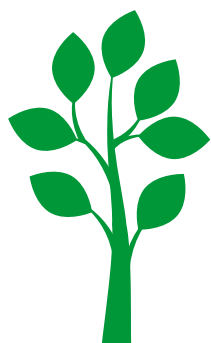
Before Care

(7:30 - 8:45 AM)



After Care

(4:15 - 5:30 PM)



North Site

600 Northmount Drive NW
Calgary, Alberta

Monday - Friday, 9 AM - 4 PM

Camp Bonaventure North Site is our satellite camp.

Located at the Cambrian Heights Community Association, this location offers similar off-site, swim days, and theme days as our Sandy Beach site, just in a different setting!

Ages
7 to 17



Before and After Care

Cost

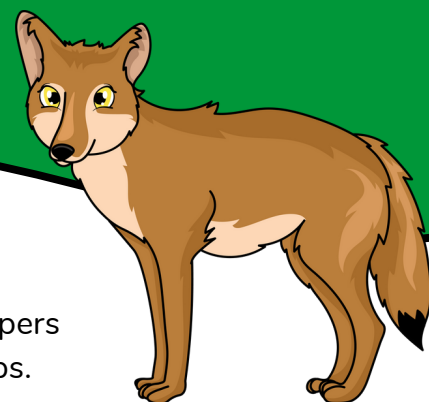
By Age, Session, and Site



Site	Group & Ages	Session Dates	Cost
SANDY BEACH	Minnows 4-5 years	Session 1: July 3 - July 14 Session 2: July 17 - July 28 Session 3: July 31 - August 11 (No Camp August 7) Session 4: August 14 - August 25	Session 1, 2, & 4: \$770 Session 3: \$660
	Chipmunks 6-7 years		Session 1, 2, & 4: \$1100 Session 3: \$990
	Otters 8-9 years		Session 1, 2, & 4: \$1100 Session 3: \$990
	Badgers 10-11 years		Session 1, 2, & 4: \$1100 Session 3: \$990
	Wolverines 12-13 years		Session 1, 2, & 4: \$1100 Session 3: \$990
	Coyotes 14-15 years		Session 1, 2, & 4: \$1100 Session 3: \$990
	Grizzlies 16-17 years		Session 1, 2, & 4: \$1100 Session 3: \$990
NORTH SITE	Beavers 7-11 years		Session 1, 2, & 4: \$1100 Session 3: \$990
	Bison 12-17 years		Session 1, 2, & 4: \$1100 Session 3: \$990

Before & After Care

Sandy Beach Site Only



Campers registering at Camp Bonaventure Sandy Beach:

If families need to drop off their campers earlier and/or pick up their campers later, we offer before care and after care programming for all age groups.

Before Care & After Care: Families can **opt-in** for this service on a weekly basis for the weeks your camper will be attending camp. For example: If your camper is registered for Session 1, you can register for before care and after care programming in Week 1 and/or Week 2.

Extended Minnows: For our Minnows, extended care will include both before camp and after camp programming.

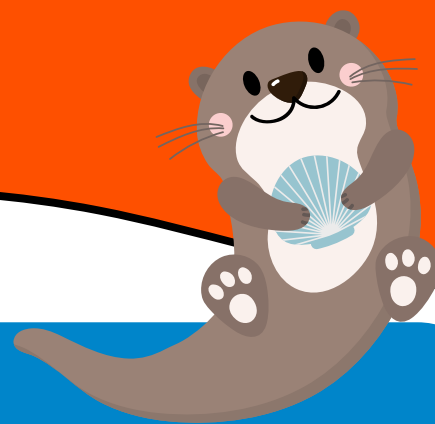
(Before care and after care programming is not available at the North Site.)

Opt-In Care (Sandy Beach only)	Time(s)	Dates	Cost
Extended Minnows (ages 4-5)	9 - 10 AM and 3 - 4 PM	Session 1 - Week 1: July 3 - July 7 Week 2: July 10 - July 14	\$55/week \$40/week - Week 6 only
Before Care* (ages 6-17)	7:30 - 8:45 AM	Session 2 - Week 3: July 17 - July 21 Week 4: July 24 - July 28 Session 3 - Week 5: July 31 - August 4 Week 6: August 8 - August 11	\$65/week \$50/week - Week 6 only
After Care* (ages 6-17)	4:15 - 5:30 PM	Session 4 - Week 7: August 14 - August 18 Week 8: August 21 - August 25	\$65/week \$50/week - Week 6 only

*If you're registering your camper for Before Care and After Care, please be sure to register for each service separately.

Camper Support

At Camp Bonaventure



**1:4
Ratio**

In-Program Support

Camp Bonaventure runs at a **1:4 ratio**.

- This means that there is **1 staff** for every **4 campers**. Groups are also joined by **volunteers** who help provide extra support.

During **swimming** activities, we run at a **1:2 ratio** - **1 staff** or volunteer for **2 campers**.

- Campers who use **wheelchairs** will be **1:1** in the pool with a staff or volunteer.

Is this enough support for your camper?

Take a moment to think about the support your camper will need at camp.

Campers who need additional support are **welcome to attend** Camp Bonaventure **with the support of their own private aide**. Families are responsible for finding their own support aides.



" Does my camper need extra support? "

The next page will provide more information on what families should consider.

Questions about extra support?



403 269 9133



info@betweenfriends.ab.ca



Monday - Thursday
9:00 AM - 4:00 PM

11

Camper Support

At Camp Bonaventure



Camp Bonaventure welcomes kids of all abilities. Our community is unique and we support many kids with or without disabilities and diagnoses. As such, our staff and volunteers are trained to make sure that your camper has a **fun** and **safe** time at camp.

While we are ready to support your camper and have fun with them at summer camp, we run our programs at a 1:4 ratio. Between Friends is unable to provide 1:1 support or support aides for our campers who will need this additional help. Families will need to provide a personal support aide to support their camper.

Resources to Finding a Support Aide



Your camp will require a support aide if:

- They require **significant personal care** support
- They **leave the group frequently** by running or wandering away
- They **frequently** require a **lot of time to transition**
- They often express **physical aggression** (pinch, bite, punch, etc.) toward themselves or others
- They require the following **medications/medical assistance**:
 - Injections (other than EpiPens),
 - Nebulizers,
 - Any medication or device **inserted** into the rectum, vagina, or penis.

During camp: If it is determined that your camper needs 1:1 support based on their needs beyond what our staff can provide support with, families will be asked to bring a support aide to attend camp with their child. Assessments will be made by the Membership Team and Camp Senior Team taking into consideration the above questions. When this is determined, **the camper will not be able to come to camp until they have that 1:1 support.**

We recommend finding support early if you feel your camper will be more successful with an aide. Between Friends does not provide support aides - please refer to the resource provided.

Questions about extra support?



403 269 9133



info@betweenfriends.ab.ca

Monday - Thursday
9:00 AM - 4:00 PM

FSCD

Camp Bonaventure



If your camper has an FSCD contract for Camp Bonaventure, you must send your FSCD support worker **proof of registration for Camp Bonaventure**.

Proof of registration is in the form of a receipt or invoice.

If you require proof of registration, please contact the Membership Team by email - info@betweenfriends.ab.ca

Will FSCD cover before care & after care?

No.

FSCD will only cover a maximum of 2 Camp Bonaventure sessions (ie. 4 weeks).

FSCD does not cover Extended Minnows, Before Care, or After Care.

This is also the case for our Between Friends Fee Assistance Program.

How does your Fee Assistance Program work with FSCD?

Some FSCD contracts will cover a portion of Camp Bonaventure fees. The remaining fees - or the **parent portion**, is the amount families pay out-of-pocket.

Between Friends will be able to support eligible families by providing additional fee assistance on the **parent portion**. To apply for the Between Friends Fee Assistance Program: [CLICK HERE](#)

Does Between Friends direct-bill FSCD?

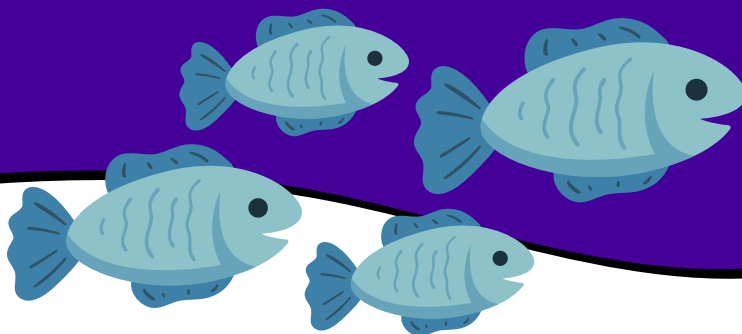
No.

Families will need to pay their full invoice with Between Friends and submit their claim to FSCD for reimbursement.

Between Friends offers flexible payment plans. Please contact the Membership Team to discuss this option in detail: info@betweenfriends.ab.ca | 403 269 9133

FAQ

Camp Bonaventure



Can I register for just 1 week of camp?

No.

Our camp sessions are priced for the **full two weeks** of camp. We are **not able to accommodate** half days, half sessions (1 week), or otherwise.

Can I register for single days of extended care?

No.

Our extended care sessions are priced for the **full week** of camp. Families can choose to use all or some of the extended care service during the week, but we are not able to refund or adjust the cost for the days the camper does not use this service.

Will I need to send snacks and lunch for my camper?

Yes!

Campers will need to bring their own snacks and lunch each day (unless otherwise stated on your camper's schedule for a special event). Please bring a nut free lunch. We do not offer microwaves or options to heat up food.

How and when will I receive details about camp?

2 weeks before the start of your camper's registered session date, you will receive an e-mail that includes: a schedule, a daily packing list, any applicable activity consent forms, and other friendly reminders.

More Questions?



403 269 9133



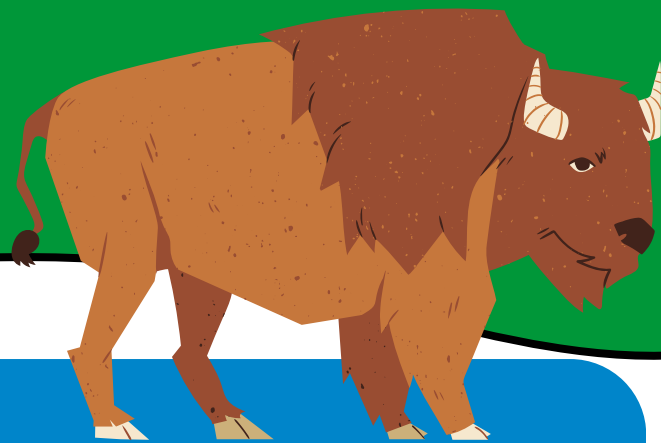
info@betweenfriends.ab.ca



Monday - Thursday
9:00 AM - 4:00 PM

Checklist

Preparing for Camp



Before Registering For Camp:

- ☐ Get your 2023 Membership
- ☐ Check your FSCD contract to make sure you know what they will cover for your camper(s)
- ☐ Need additional financial support? Apply for our Fee Assistance program (see page 5)

Registering For Camp:

- ☐ Pick the site and the session(s) that you want to attend (maximum 2 sessions)
- ☐ Have your payment ready to go (note: if applying for Fee Assistance and/or making a payment plan, you will be asked to provide a \$50 deposit)
- ☐ Register online or by phone. Registration opens February 8, 2023 at 5:30 PM
- ☐ Confirm registration with FSCD - Send them the registration confirmation that you receive after registering

Before Camp Begins:

- ☐ Consider the support needs of your camper
 - ☐ Will a 1:4 ratio allow them to be successful?
 - ☐ Do they need additional support?
 - ☐ Do I have someone who can support them at Camp?
- ☐ Fill out the pre-program questionnaire that will be sent to you close to Camp time
- ☐ Optional: Attend the Caregiver Information Night at Camp (more details to come)

**We Are So
Excited to
See You at
Camp!**

Ways You Can Give

Between Friends is where people with disabilities can feel connected, empowered, and have meaningful experiences through social and recreational programming. Consider giving today and help Between Friends continue to be a place where our participants can connect, grow and belong.

Visit: <https://betweenfriends.ab.ca/ways-to-give/>

Click the
circles to
learn more!



Build a Friends
in Motion
Team

Financial
Contribution

Legacy
Giving

Volunteer
With Us

Sponsor an
Event

Host a
Fundraiser

Skip the
Depot

Important Dates



FEBRUARY

February 8	Camp Bonaventure Registration @ 5:30 PM <ul style="list-style-type: none"> Note - phone line registration option will be open from 5:30 - 6:30 PM
------------	---

APRIL - JUNE

April 19	Youth Programs - Summer Registration Guide Released <ul style="list-style-type: none"> Adventurers, W.E.S.O.A.R!, and Special Events
May 3	Summer Program Registration @ 5:30 PM <ul style="list-style-type: none"> Note - phone line registration option will be open from 5:30 - 6:30 PM
June 29	Caregiver Information Night at Sandy Beach

JULY

July 1	Canada Day
July 3	First Day of Camp Bonaventure
July 3 - July 14	Camp Bonaventure Session 1
July 17 - July 28	Camp Bonaventure Session 2

AUGUST

July 31 - August 11	Camp Bonaventure Session 3
August 7	Heritage Day - Office Closed, No Camp
August 9	Youth Programs - Fall Registration Guide Released
August 10	End of Summer BBQ
August 14 - August 25	Camp Bonaventure Session 4
August 23	Fall Program Registration @ 5:30 PM <ul style="list-style-type: none"> Note - phone line registration option will be open from 5:30 - 6:30 PM
August 25	Last Day of Camp Bonaventure



Main Line
403 269 9133



info@betweenfriends.ab.ca



Monday - Thursday
9:00 AM - 4:00 PM

Important Dates



FEBRUARY

Sun	Mon	Tue	Wed	Thu	Fri	Sat
			1	2	3	4
5	6	7	8	9	10	11
12	13	14	15	16	17	18
19	20	21	22	23	24	25
26	27	28				

Register
for Camp

JUNE

Sun	Mon	Tue	Wed	Thu	Fri	Sat
				1	2	3
4	5	6	7	8	9	10
11	12	13	14	15	16	17
18	19	20	21	22	23	24
25	26	27	28	29	30	

Info
Night

JULY

Sun	Mon	Tue	Wed	Thu	Fri	Sat
						1
2	3	4	5	6	7	8
9	10	11	12	13	14	15
16	17	18	19	20	21	22
23	24	25	26	27	28	29
30	31					

Camp
Starts

<- Session One ->

<- Session One ->

<- Session Two ->

<- Session Two ->

Session
Three ->

AUGUST

Sun	Mon	Tue	Wed	Thu	Fri	Sat
		1	2	3	4	5
		<- Session Three ->				
6	7	8	9	10	11	12
13	14	15	16	17	18	19
		<- Session Four ->				
20	21	22	23	24	25	26
		<- Session Four ->				
27	28	29	30	31		

No
Camp

<- Session Three ->

Summer
BBQ

<- Session Four ->

<- Session Four ->

Camp
Ends