

# Camp Bonaventure, CALGARY

Summer 2025 Registration Guide



Registration  
February 5  
5:30 PM



**Between Friends**  
connect • grow • belong

# TABLE OF CONTENTS

You can find out more about each program and service in each section, or by visiting [our website](#).



## How to Register

A step-by-step guide to registering for camp



## Program Fees

How to pay, when to pay, and fee assistance



## Important Information

Cancellation policy and respect policy



## About Camp Bonaventure

What is camp? What do campers do at camp?



## Camp Bonaventure Sites

Overview of our different locations



## Cost

How much does camp cost?



## Before and After Care

Extended care outside normal camp hours



Mainline  
403 269 9133



info@betweenfriends.ab.ca



Monday - Thursday  
9:00 AM - 4:00 PM

# TABLE OF CONTENTS

You can find out more about each program and service in each section, or by visiting [our website](#).

11

## How To Pay

Payment plans and fee assistance

12

## FSCD

Information about using FSCD for Camp Bonaventure

13

## Camper Support

Ratios, support aides, and supporting your camper

15

## FAQ

Frequently asked questions about Camp Bonaventure

16

## Checklist

A checklist for registration and getting ready for camp

17

## Ways You Can Give

How to give back to Between Friends

18

## Important Dates

View all the important dates in a calendar



Mainline  
403 269 9133



info@betweenfriends.ab.ca



Monday - Thursday  
9:00 AM - 4:00 PM

# How To Register

## Before Registration Night

**1** Decide the sessions you want

**2** Get your 2025 Membership

**3** Test your member login

[Member Portal](#)



**Camp 2025 Registration Opens:  
Wednesday, February 5, at 5:30 PM**

### By Phone

 **403 508 0110**

Have your payment ready

Have your session choices ready

Call the Registration Line - 403 508 0110

- **Do not call the main line**
- **The line will be open 5:30 - 6:30 PM on registration night**

If you are sent to voicemail, **call back** - don't leave a message

- Leaving a voicemail does **not** confirm registration

OR

### Online

[Member Portal](#)

Have your credit card ready

Have your session choices ready

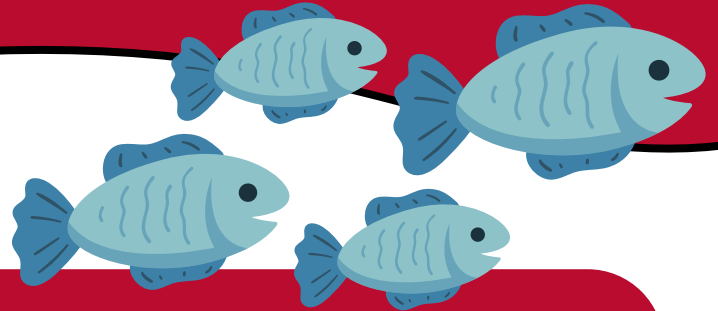
Log in or refresh the page at 5:30 PM

- **Programs will not show up before 5:30 PM**

If you have trouble, **call the Registration Line**

- (403 508 0110)

# Program Fees



## Paying for Programs

Fees for Between Friends programs are **due at the time of registration**. Credit card, cash, and cheque payments or a fee assistance form must be submitted within **five (5) business days** or your registration will be cancelled.

## Fee Assistance

Between Friends does its best to make sure that every member who wants to attend programs is given the chance. In order to be accessible, we subsidize all programs for all participants. Additional Fee Assistance is available for a maximum of:

- 2 Between Friends **Camp Bonaventure** sessions

After you submit your online application for fee assistance, our team will take a look at it. We'll get in touch with you once we figure out how much assistance you qualify for. If you have questions about the Fee Assistance Program or need help with your application form, reach out to [our team](#).

[Apply for  
Fee Assistance](#)



Mainline  
403 269 9133



info@betweenfriends.ab.ca



Monday - Thursday  
9:00 AM - 4:00 PM

# Important Information

## Cancelling Your Program Registration

To cancel your registration, send an email to [info@betweenfriends.ab.ca](mailto:info@betweenfriends.ab.ca).

A **15% fee** will be charged for all cancellations. Refunds will only be issued if we can fill the spot you vacated, and you inform the office about your cancellation.

If a program is canceled due to low registration, you may transfer to another program if space is available, or receive a full refund. We will contact you before the program begins if we have to cancel it.



## Respect Policy

A safe and welcoming space is a shared community responsibility. We expect our members, parents, guardians, caregivers, and support persons to treat Between Friends personnel with respect and dignity.

Behaviours that make anyone feel unwelcome or unsafe will not be tolerated and appropriate steps will be taken to address these behaviours. Between Friends reserves the right to remove anyone not contributing to a safe and welcoming environment from current and future programs and membership.

Thank you for helping us create a community that is inclusive, respectful, safe, and kind.



Main Line  
403 269 9133



[info@betweenfriends.ab.ca](mailto:info@betweenfriends.ab.ca)



Monday - Thursday  
9:00 AM - 4:00 PM

# About Camp Bonaventure

Registration  
February 5  
5:30 PM

**Camp Bonaventure** is our summer day camp for youth of all abilities, located in Calgary! Each camp session spans **2 weeks**, running from **Monday to Friday**. The camp offers a variety of exciting activities for campers to enjoy during their time with us:

## ON-SITE DAYS

Campers spend the day on-site with their team. There will be games, activities, and visits from special guests! These guests include **gardeners, magicians, yoga instructors**, and more.

## OFF-SITE DAYS

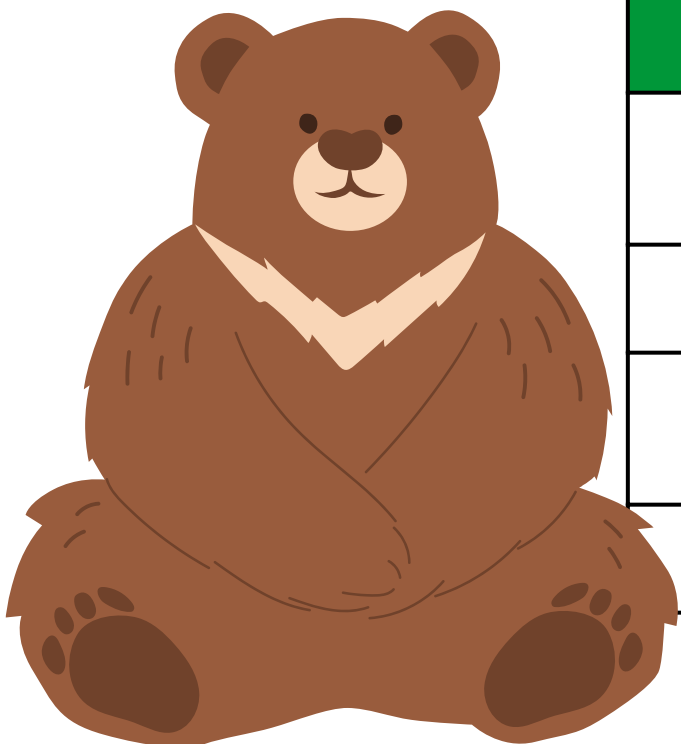
It's a field trip! We'll take a bus ride to places such as **Telus Spark**, the **Corn Maze**, **Bow Habitat**, and more.

## SWIM DAYS

Campers will spend the morning on-site with their team playing games and doing activities. After lunch, they'll make their way to a nearby **swimming pool** for a splashing good time!

## THEME DAYS

Campers will be on-site taking part in **games and activities** keeping in the theme of this day. Extra points for dressing up in **costume** and getting into character!



Session	Dates
Session 1	June 30 - July 11 (No Camp July 1)
Session 2	July 14 - July 25
Session 3	July 28 - August 8 (No Camp August 4)
Session 4	August 11 - August 22

There is a maximum registration of 2 sessions per camper.


# Camp Bonaventure Sites



Ages  
4 to 17

## Sandy Beach

**Camp Bonaventure Sandy Beach** is our main day camp site. We have our own open building (called "The Shelter"), an in-ground trampoline, an accessible garden, and a sensory room!

 1215 50 Avenue SW  
Calgary, Alberta



A session spans 2 weeks, running Monday to Friday.

**Hours:** 9:00 AM - 4:00 PM

**\*Minnows (ages 4-5) Hours:** 10:00 AM - 3:00 PM

### Additional Service (Sandy Beach Only)

**Note:** Costs for these services are extra in addition to camp registration fees. These services do not qualify for fee assistance.

**Extended Minnows (ages 4-5)**  
(9:00 - 10:00 AM and 3:00 - 4:00 PM)


**Before Care**  
7:30 - 8:45 AM

**After Care**  
4:15 - 5:30 PM

Ages  
7 to 17

## North Site

**Camp Bonaventure North Site** is our satellite camp. Located at the Thorncliffe Greenview Community Association, this location offers similar off-site, swim days, and theme days as our Sandy Beach site, just in a different setting!

 5600 Centre Street N  
Calgary, Alberta



A session spans 2 weeks, running Monday to Friday.

**Hours:** 9:00 AM - 4:00 PM



# Cost

## By Age, Session, and Site



Site	Group & Ages	Session Dates	Cost
SANDY BEACH	<b>Minnows</b> 4-5 years	<b>Session 1:</b> June 30 - July 11 (no Camp July 1)  <b>Session 2:</b> July 14 - July 25  <b>Session 3:</b> July 28 - August 8 (no Camp August 4)  <b>Session 4:</b> August 11 - August 22	Session 1 & 3: <b>\$860</b> Session 2 & 4: <b>\$970</b>
	<b>Chipmunks</b> 6-7 years		Session 1 & 3: <b>\$1190</b> Session 2 & 4: <b>\$1300</b>
	<b>Otters</b> 8-9 years		Session 1 & 3: <b>\$1190</b> Session 2 & 4: <b>\$1300</b>
	<b>Badgers</b> 10-11 years		Session 1 & 3: <b>\$1190</b> Session 2 & 4: <b>\$1300</b>
	<b>Wolverines</b> 12-13 years		Session 1 & 3: <b>\$1190</b> Session 2 & 4: <b>\$1300</b>
	<b>Coyotes</b> 14-15 years		Session 1 & 3: <b>\$1190</b> Session 2 & 4: <b>\$1300</b>
	<b>Grizzlies</b> 16-17 years		Session 1 & 3: <b>\$1190</b> Session 2 & 4: <b>\$1300</b>
NORTH SITE	<b>Bats</b> 7-9 years	Session 1 & 3: <b>\$1190</b> Session 2 & 4: <b>\$1300</b>	
	<b>Beavers</b> 10-12 years	Session 1 & 3: <b>\$1190</b> Session 2 & 4: <b>\$1300</b>	
	<b>Bison</b> 13-17 years	Session 1 & 3: <b>\$1190</b> Session 2 & 4: <b>\$1300</b>	

# Before & After Care

## Sandy Beach Site Only



### Campers Registered at Camp Bonaventure Sandy Beach:

We offer additional programming if families need to drop off their campers early and/or pick up their campers later.

**Before Care & After Care:** Families have the **option** to choose and pay for each service on a weekly basis, depending on the weeks your camper will be at the camp. For example, if your camper is enrolled in Session 1, you can sign up for before care **and/or** after care programming in Week 1 **and/or** Week 2.

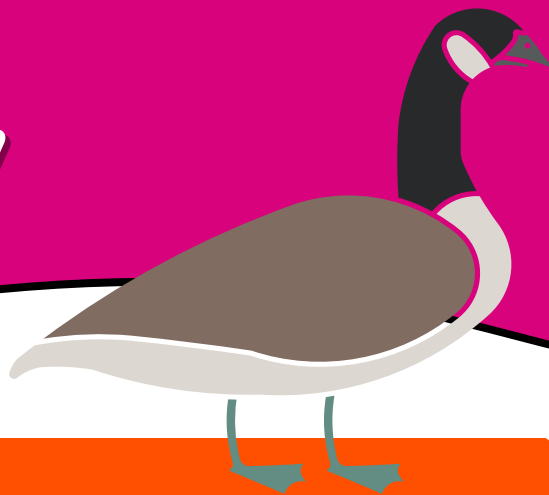
**Extended Minnows:** For Minnows (ages 4-5), families have the **option** to choose extended care. Extended care includes both before camp and after camp programming.

(Before care and after care programming is not available at the North Site.)

Opt-In Care (Sandy Beach only)	Time(s)	Dates	Cost
Extended Minnows (ages 4-5)	9:00 - 10:00 AM and 3:00 - 4:00 PM	Session 1 - <b>Week 1:</b> June 30 - July 4 (no program July 1) <b>Week 2:</b> July 7 - July 11	<b>\$65/week</b> <b>\$50/week</b> - Weeks 1 & 6
* Before Care (ages 6-17)	7:30 - 8:45 AM	Session 2 - <b>Week 3:</b> July 14 - July 18 <b>Week 4:</b> July 21 - July 25	<b>\$75/week</b> <b>\$60/week</b> - Weeks 1 & 6
* After Care (ages 6-17)	4:15 - 5:30 PM	Session 3 - <b>Week 5:</b> July 28 - August 1 <b>Week 6:</b> August 5 - August 8	<b>\$75/week</b> <b>\$60/week</b> - Weeks 1 & 6
		Session 4 - <b>Week 7:</b> August 11- August 15 <b>Week 8:</b> August 18- August 22	

\*If you're registering your camper for Before Care and After Care, please be sure to register for each service separately. However, you do not need to register for both services.

# How To Pay



## How Do I Pay for Camp?

After completing your camp registration, you have several payment options available: **Credit Card, Cash, Cheque, or e-Transfer.**

Full payment is requested **within five (5) days of registration.**

If paying the full amount within five days doesn't fit your financial situation, no worries! You can make a \$50 deposit per session, and our team can help you with Fee Assistance or setting up a payment plan.

## What is a payment plan?

A payment plan is a financial plan that you and our team create together to space out payments in a way that is comfortable for you.

This could include weekly or monthly payments, or postponing the payment for a later date. Our team is very flexible and is happy to help create a plan that works for everyone!

Check out  
Page 5 for  
Fee Assistance  
Info!



Hi, I'm Kit!

One of our values at Between Friends is “No Barriers”, and that includes financial barriers!

We want to make sure that everyone can access Camp Bonaventure, regardless of their financial situation. Reach out to our team if you need help getting started!

# FSCD

## Camp Bonaventure



If your camper has an FSCD contract for Camp Bonaventure, you must send your FSCD support worker **proof of registration for Camp Bonaventure**.

**Proof of registration** is in the form of a **receipt** or **invoice**.

If you require proof of registration, please contact us by email - [info@betweenfriends.ab.ca](mailto:info@betweenfriends.ab.ca)

### Will FSCD cover before care and after care services?

No.

FSCD will only cover a maximum of 2 Camp Bonaventure sessions (ie. 4 weeks). FSCD may cover Extended Minnows, Before Care, or After Care. Please reach out to your case worker to learn more.

### How does your Fee Assistance Program work with FSCD?

Some FSCD contracts will cover a portion of Camp Bonaventure fees. The remaining fees - or the **parent portion**, is the amount families pay out-of-pocket.

Between Friends will be able to support eligible families by providing additional fee assistance **on the parent portion**. To apply for the **Between Friends Fee Assistance Program**: [CLICK HERE](#)

### Does Between Friends direct-bill FSCD?

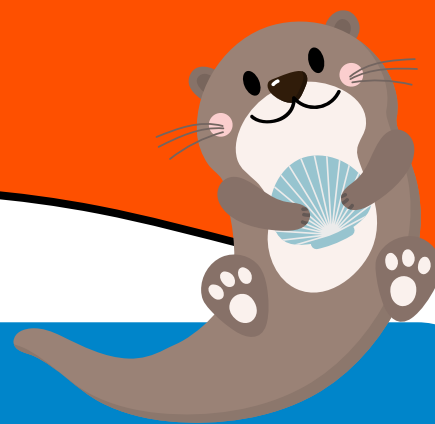
No.

Families will need to pay their full invoice with Between Friends and submit their claim to FSCD for reimbursement.

Between Friends offers flexible payment plans. Please contact us to discuss this option in detail: [info@betweenfriends.ab.ca](mailto:info@betweenfriends.ab.ca) | 403 269 9133

# Camper Support

## At Camp Bonaventure



**1:4  
Ratio**

### In-Program Support

Camp Bonaventure runs at a **1:4 ratio**.

- This means that there is **1 staff** for every **3-4 campers**. Groups are also joined by **volunteers** who help provide extra support.

During **swimming** activities, we run at a **1:2 ratio** - **1 staff** or volunteer for **2 campers**.

- Campers who use **wheelchairs** will be **1:1** in the pool with a staff or volunteer.

## Is this enough support for your camper?

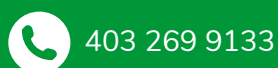
Take a moment to think about the support your camper will need at camp. Campers who need additional support are **welcome to attend** Camp Bonaventure **with the support of a private aide**.



## " Does my camper need extra support? "

The next page will provide more information on what families should consider.

### Questions about extra support?



403 269 9133



info@betweenfriends.ab.ca



Monday - Thursday  
9:00 AM - 4:00 PM

13

# Camper Support

## At Camp Bonaventure



Camp Bonaventure welcomes kids of all abilities. Our community is unique and we support many kids with or without disabilities and diagnoses. As such, our staff and volunteers are trained to make sure that your camper has a **fun** and **safe** time at camp.

While we are ready to support your camper and have fun with them at summer camp, we run our programs at a 1:4 ratio. Between Friends is unable to provide 1:1 support or support aides for our campers who will need this additional help. We ask that families bring a personal support aide to support the camper.

### Resources to Finding a Support Aide



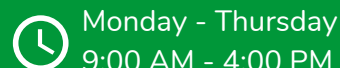
#### Your camper will require a support aide if:

- They require **significant personal care** support
- They **leave the group frequently** by running or wandering away
- They **frequently** require a **lot of time to transition**
- They often express **physical aggression** (pinch, bite, punch, etc.) toward themselves or others
- They require the following **medications/medical assistance**:
  - Injections (excluding EpiPens),
  - Nebulizers,
  - Any medication or device **inserted** into the rectum, vagina, or penis.

**During camp:** If it is determined that your camper needs 1:1 support beyond what our staff can offer support with, families will be asked to provide a support aide for their child at camp. The Membership Experience Corrdinator and Camp Senior Team will assess the situation, considering the questions above. When this is determined, **the camper will not be able to come to camp until they have that 1:1 support.**

We recommend finding support early if you feel your camper will be more successful with an aide. Between Friends does not provide support aides - please refer to the resource provided.

### Questions about extra support?



# FAQ

## Camp Bonaventure



### Can I register for just 1 week of camp?

No.

Our camp sessions are priced for the **full two weeks** of camp. We are **not able to accommodate** half days, half sessions (1 week), or otherwise.

### Can I register for single days of extended care?

No.

Our extended care sessions are priced for the **full week** of camp. Families can choose to use all or some of the extended care service during the week, but we are not able to refund or adjust the cost for the days the camper does not use this service.

### Will I need to send snacks and lunch for my camper?

Yes!

Campers will need to bring their own snacks and lunch each day (unless otherwise stated on your camper's schedule for a special event). Please bring a **nut free** lunch and snacks. We do not offer microwaves or options to heat up food.

### How and when will I receive details about camp?

2 weeks before the start of your camper's registered session date, you will receive an e-mail that includes: a schedule, a daily packing list, any applicable activity consent forms, and other friendly reminders.

## More Questions?



403 269 9133



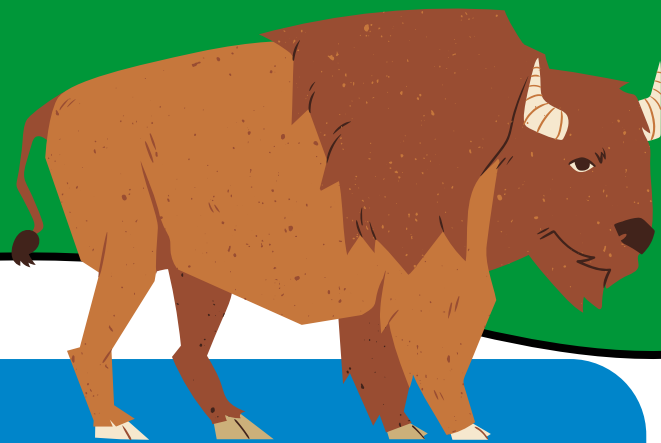
info@betweenfriends.ab.ca



Monday - Thursday  
9:00 AM - 4:00 PM

# Checklist

## Preparing for Camp



### Before Registering For Camp:

- Get your 2025 Membership
- Check your FSCD contract to make sure you know what they will cover for your camper(s)
- Need additional financial support? Apply for our Fee Assistance program (see page 5)

### Registering For Camp:

- Pick the site and the session(s) that you want to attend (maximum 2 sessions)
- Have your payment ready to go (note: if applying for Fee Assistance and/or making a payment plan, you will be asked to provide a \$50 deposit)
- Register online or by phone. Registration opens February 5, 2025 at 5:30 PM
- Confirm registration with FSCD - Send them the registration confirmation that you receive after registering

### Before Camp Begins:

- Consider the support needs of your camper
  - Will a 1:4 ratio allow them to be successful?
  - Do they need additional support?
  - Do I have someone who can support them at Camp?
- Fill out the pre-program questionnaire that will be sent to you close to Camp time
- Optional: Attend the Caregiver Information Night at Camp (more details to come)

We Are So  
Excited to  
See You at  
Camp!



# Ways You Can Give

Between Friends is where people with disabilities can feel connected, empowered, and have meaningful experiences through social and recreational programming. Consider giving today and help Between Friends continue to be a place where our participants can connect, grow and belong.

Visit: <https://betweenfriends.ab.ca/ways-to-give/>

Click the circles to learn more!



Build a Friends  
in Motion  
Team

Financial  
Contribution

Legacy  
Giving

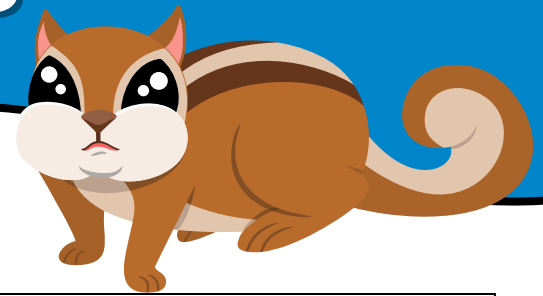
Volunteer  
With Us

Sponsor an  
Event

Host a  
Fundraiser

Skip the  
Depot

# Important Dates



## FEBRUARY

February 5	<b>Camp Bonaventure Registration @ 5:30 PM</b> <ul style="list-style-type: none"> <li>Note - phone line registration option will be open from 5:30 - 6:30 PM</li> </ul>
------------	---

## JUNE

June 24	Aide Information Night - Calgary Sites - more info coming soon!
June 25	Sandy Beach Caregiver Information Night - more info coming soon!
June 26	North Site Caregiver Information Night - more info coming soon!
June 30	First Day of <b>Camp Bonaventure</b>
June 30 - July 11	<b>Camp Bonaventure Session 1</b> <ul style="list-style-type: none"> <li>Note- no Camp July 1</li> </ul>

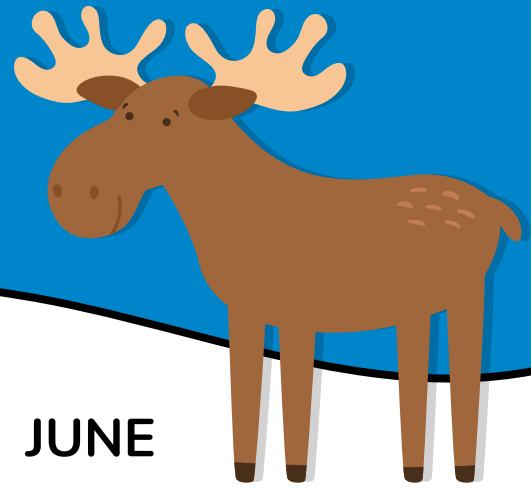
## JULY

July 1	<b>Canada Day - Office Closed, No Programs</b>
July 14 - July 25	<b>Camp Bonaventure Session 2</b>
July 28 - August 8	<b>Camp Bonaventure Session 3</b> <ul style="list-style-type: none"> <li>Note - no Camp August 4</li> </ul>

## AUGUST

August 4	<b>Heritage Day - Office Closed, No Programs</b>
August 11 - August 22	<b>Camp Bonaventure Session 4</b>
August 13	Youth Programs - Fall Registration Guide Released
August 14	<b>End of Summer BBQ</b>
August 22	Last Day of <b>Camp Bonaventure</b>
August 27	<b>Fall Program Registration @ 5:30 PM</b> <ul style="list-style-type: none"> <li>Note - phone line registration option will be open from 5:30 - 6:30 PM</li> </ul>

# Important Dates



## FEBRUARY

Sun	Mon	Tue	Wed	Thu	Fri	Sat
						1
2	3	4	5	6	7	8
9	10	11	12	13	14	15
16	17	18	19	20	21	22
23	24	25	26	27	28	

Register for Camp

## JUNE

Sun	Mon	Tue	Wed	Thu	Fri	Sat
1	2	3	4	5	6	7
8	9	10	11	12	13	14
15	16	17	18	19	20	21
22	23	24	25	26	27	28
29	30					

Camp Starts

Aide Info Night

Sandy Caregiver Night

North Caregiver Night

## JULY

Sun	Mon	Tue	Wed	Thu	Fri	Sat
		1	2	3	4	5
6	7	8	9	10	11	12
13	14	15	16	17	18	19
20	21	22	23	24	25	26
27	28	29	30	31		

No Camp

<- Session One ->

<- Session One ->

<- Session Two ->

<- Session Two ->

<- Session Three ->

## AUGUST

Sun	Mon	Tue	Wed	Thu	Fri	Sat
					1	2
3	4	5	6	7	8	9
10	11	12	13	14	15	16
17	18	19	20	21	22	23
24	25	26	27	28	29	30

No Camp

<- Session Three ->

<- Session Four ->

<- Session Four ->

Camp Ends