

# Camp Bonaventure, CALGARY

Summer 2026 Registration Guide



Registration  
February 4  
5:30 PM



**Between Friends**  
connect • grow • belong

# TABLE OF CONTENTS

You can find out more about each program and service in each section, or by visiting [our website](#).

4

## How to Register

A step-by-step guide to registering for camp

5

## Program Fees

How to pay, when to pay, and fee assistance

6

## Important Information

Cancellation policy and respect policy

7

## About Camp Bonaventure

What is camp? What do campers do at camp?

8

## Camp Bonaventure Sites

Overview of our different locations

9

## Cost

How much does camp cost?

10

## How To Pay

Payment plans and fee assistance



Mainline  
403-269-9133



[info@betweenfriends.ab.ca](mailto:info@betweenfriends.ab.ca)



Monday - Friday  
9:00 AM - 4:00 PM

# TABLE OF CONTENTS

You can find out more about each program and service in each section, or by visiting [our website](#).

11

## FSCD

Information about using FSCD for Camp Bonaventure

12

## Camper Support

Ratios, support aides, and supporting your camper

14

## FAQ

Frequently asked questions about Camp Bonaventure

15

## Checklist

A checklist for registration and getting ready for camp

16

## Ways You Can Give

How to give back to Between Friends

17

## Important Dates

View all the important dates in a calendar



Mainline  
403-269-9133



info@betweenfriends.ab.ca



Monday - Friday  
9:00 AM - 4:00 PM



# How To Register

## Before Registration Night

**1** Decide which sessions you want

**2** Get your 2026 Membership

**3** Test your member login

[Member Portal](#)



**Camp 2026 Registration Opens:  
Wednesday, February 4, at 5:30 PM**

### By Phone



**403-508-0110**

**OR**

Have your payment ready.

Have your session choices ready.

Call the Registration Line → 403-508-0110

- **Do not call the main line**
- **The line will be open 5:30 - 6:30 PM on registration night**

If you are sent to voicemail, **call back** - don't leave a message

- Leaving a voicemail does **not** confirm registration

### Online

**[Member Portal](#)**

Have your credit card ready

Have your session choices ready

Log in or refresh the page at 5:30 PM

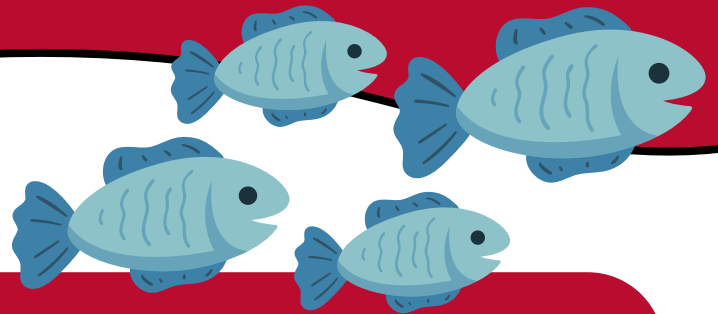
- **Programs will not show up before 5:30 PM**

If you have trouble, **call the Registration Line**

- (403-508-0110)



# Program Fees



## Paying for Programs

Fees for Between Friends programs are **due at the time of registration**. Credit card, cash, and cheque payments or a fee assistance form must be submitted within **five (5) business days** or your registration will be cancelled.

## Fee Assistance

Between Friends does its best to make sure that every member who wants to attend programs is given the chance. In order to be accessible, we subsidize all programs for all participants. Additional Fee Assistance is available for a maximum of:

- 2 Between Friends **Camp Bonaventure** sessions

After you submit your online application for fee assistance, our team will take a look at it. We'll get in touch with you once we figure out how much assistance you qualify for. If you have questions about the Fee Assistance Program or need help with your application form, reach out to [our team](#).

[Apply for  
Fee Assistance](#)



# Important Information

## Cancelling Your Program Registration

To cancel your registration, send an email to [info@betweenfriends.ab.ca](mailto:info@betweenfriends.ab.ca).

A **15% fee** will be charged for all cancellations. Refunds will only be issued if we can fill the spot you vacated, and you **inform the office about your cancellation**.

If a program is canceled due to low registration, you may transfer to another program if space is available, or receive a full refund. We will contact you before the program begins if we have to cancel it.



## Respect Policy

A safe and welcoming space is a shared community responsibility. We expect our members, parents, guardians, caregivers, and support persons to treat Between Friends personnel with respect and dignity.

Behaviours that make anyone feel unwelcome or unsafe will not be tolerated and appropriate steps will be taken to address these behaviours. Between Friends reserves the right to remove anyone not contributing to a safe and welcoming environment from current and future programs and membership.

**Thank you for helping us create a community that is inclusive, respectful, safe, and kind.**



Main Line  
403-269-9133



[info@betweenfriends.ab.ca](mailto:info@betweenfriends.ab.ca)



Monday - Friday  
9:00 AM - 4:00 PM

# About Camp Bonaventure

Registration  
February 4  
5:30 PM

**Camp Bonaventure** is our summer day camp for youth of all abilities, located in Calgary! Each camp session spans **2 weeks**, running from **Monday to Friday**. The camp offers a variety of exciting activities for campers to enjoy during their time with us:

## ON-SITE DAYS

Campers spend the day on-site with their team. There will be games, activities, and visits from special guests! These guests include **gardeners, magicians, yoga instructors**, and more.

## OFF-SITE DAYS

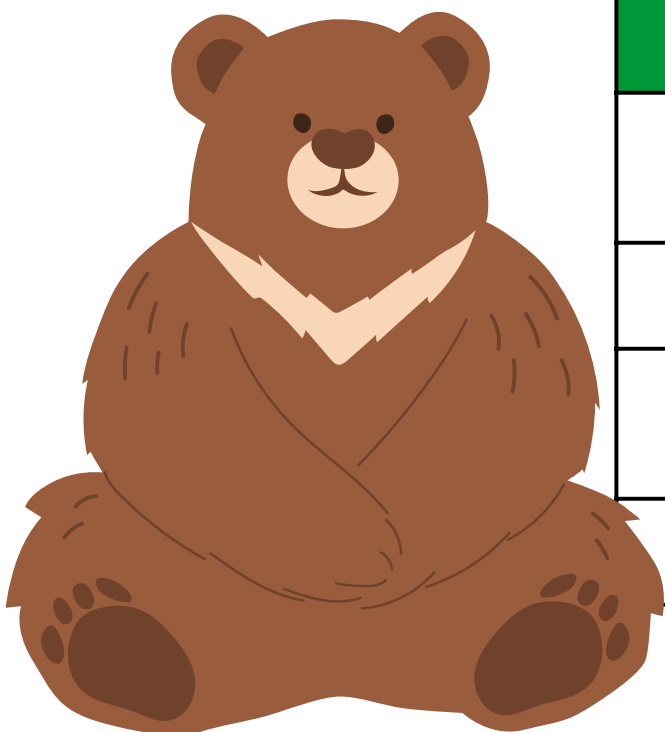
It's a field trip! We'll take a bus ride to places such as **Telus Spark**, the **Corn Maze**, **Bow Habitat**, and more.

## SWIM DAYS

Campers will spend the morning on-site with their team playing games and doing activities. After lunch, they'll make their way to a nearby **swimming pool** for a splashing good time!

## THEME DAYS

Campers will be on-site taking part in **games and activities** keeping in the theme of this day. Extra points for dressing up in **costume** and getting into character!



Session	Dates
Session 1	June 29 - July 10 (No Camp- Wednesday, July 1)
Session 2	July 13 - July 24
Session 3	July 27 - August 7 (No Camp- Monday, August 3)
Session 4	August 10 - August 21

There is a maximum registration of 2 sessions per camper.



# Camp Bonaventure Sites



## North Site

Ages  
4 to 17

**Camp Bonaventure North Site** is one of two satellite camps this year, based at the **Thornccliffe Greenview Community Association**. This camp follows the same fun format as our Sandy Beach Site, with off-site adventures, swim days, and special theme days, all hosted in a different space.



5600 Centre Street N  
Calgary, Alberta



9:00 AM - 4:00 PM

## Sandy Beach

Ages  
4 to 17

**Camp Bonaventure Sandy Beach** has been our main day camp site for decades. Campers can look forward to our beautiful space along with an in-ground trampoline, an accessible garden, and a calming sensory room designed to support a variety of needs.



1215 50 Avenue SW  
Calgary, Alberta



9:00 AM - 4:00 PM

## South Site

**New!**

Ages  
4 to 17

**Camp Bonaventure South Site** is our second satellite camp, launching this year at **Willow Ridge Community Association**. This location offers more room to move, play, and explore. This site is situated on an expansive park, wide open green space, and a wide variety of sports amenities, making it a great fit for active games, group activities and an unforgettable summer!



680 Acadia Drive SE  
Calgary, Alberta



9:00 AM - 4:00 PM

# Cost

## By Age, Session, and Site

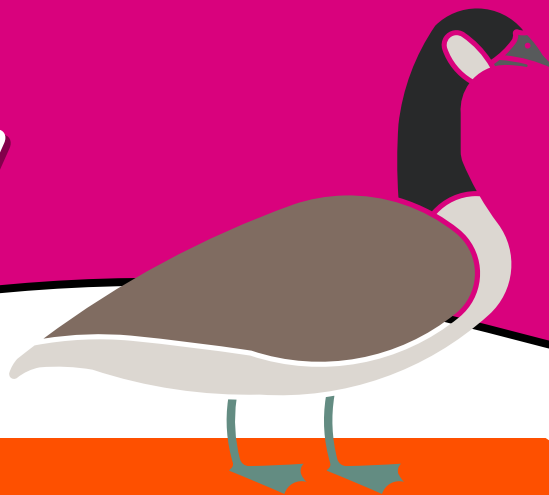


Site	Group & Ages
NORTH SITE	<b>Bats</b> 4-7 years
	<b>Beavers</b> 8-12 years
	<b>Bison</b> 13-17 years
SANDY BEACH	<b>Chipmunks</b> 4-7 Years
	<b>Badgers</b> 8-12 Years
	<b>Coyotes</b> 13-17 years
SOUTH SITE	<b>Otters</b> 4-7 Years
	<b>Wolverines</b> 8-12 Years
	<b>Grizzly</b> 13-17 Years

2026 Sessions	
<b>Session 1:</b>	June 29 - July 10 (No Camp - Wednesday, July 1)
<b>Session 2:</b>	July 13 - July 24
<b>Session 3:</b>	July 27 - August 7 (No Camp - Monday, August 3)
<b>Session 4:</b>	August 10 - August 21

2026 Costs	
<b>Session #1:</b>	\$1170
<b>Session #2:</b>	\$1300
<b>Session #3:</b>	\$1170
<b>Session #4:</b>	\$1300

# How To Pay



## How Do I Pay for Camp?

After completing your camp registration, you have several payment options available:  
**Credit Card, Cash, Cheque, or e-Transfer.**

Full payment is requested **within five (5) days of registration.**

If paying the full amount within five days doesn't fit your financial situation, no worries!  
You can make a \$50 deposit per session, and our team can help you with Fee Assistance or setting up a payment plan.

### What is a payment plan?

A payment plan is a financial plan that you and our team create together to space out payments in a way that is comfortable for you.

This could include weekly or monthly payments, or postponing the payment for a later date. Our team is very flexible and is happy to help create a plan that works for everyone!

Check out  
Page 5 for  
Fee Assistance  
Info!



**Hi, I'm Kit!**

One of our values at Between Friends is “**No Barriers**”, and that includes financial barriers!

We want to make sure that everyone can access Camp Bonaventure, regardless of their financial situation. Reach out to our team if you need help getting started!

info@betweenfriends.ab.ca | 403-269-9133



# FSCD

## Camp Bonaventure



If your camper has an FSCD contract for Camp Bonaventure, you must send your FSCD support worker **proof of registration for Camp Bonaventure**.

**Proof of registration is in the form of a receipt or invoice.**

If you require proof of registration, please contact us by email -  
[info@betweenfriends.ab.ca](mailto:info@betweenfriends.ab.ca)

### How does your Fee Assistance Program work with FSCD?

Some FSCD contracts will cover a portion of Camp Bonaventure fees.

The remaining fees, or the **parent portion**, is the amount families pay out-of-pocket.

Between Friends will be able to support eligible families by providing additional fee assistance **on the parent portion**. To apply for the Between Friends Fee Assistance Program: [\*\*CLICK HERE\*\*](#)

### Does Between Friends direct-bill FSCD?

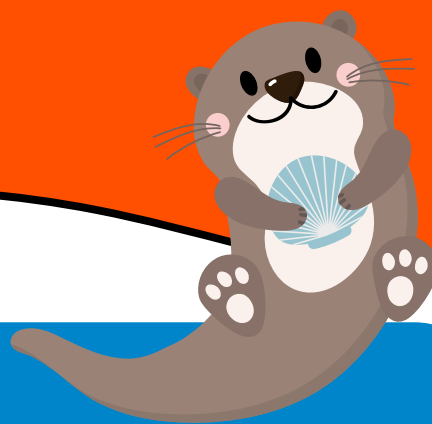
**No** – Families will need to pay their full invoice with Between Friends and submit their claim to FSCD for reimbursement. Between Friends offers flexible payment plans.



Still have questions about fee assistance, payments plans, or other options?  
We're happy to help → [feeassistance@betweenfriends.ab.ca](mailto:feeassistance@betweenfriends.ab.ca) | 403-269-9133

# Camper Support

## At Camp Bonaventure



**1:4  
Ratio**

### In-Program Support

Camp Bonaventure runs at a **1:4 ratio**.

- This means that there is **1 staff** for every **3-4 campers**. Groups are also joined by **volunteers** who help provide extra support.

During **swimming** activities, we run at a **1:2 ratio** - **1 staff** or volunteer for **2 campers**.

- Campers who use **wheelchairs** will be **1:1** in the pool with a staff or volunteer.

## Is this enough support for your camper?

Take a moment to think about the support your camper will need at camp.

Campers who need additional support are **welcome to attend** Camp Bonaventure **with the support of a private aide**.



## " Does my camper need extra support? "

The next page will provide more information on what families should consider.

### Questions about extra support?



403-269-9133



info@betweenfriends.ab.ca



Monday - Friday  
9:00 AM - 4:00 PM

# Camper Support

## At Camp Bonaventure



Camp Bonaventure welcomes kids of all abilities and is an inclusive summer camp created to support children with diverse abilities and support needs. Our trained staff and volunteers are committed to providing a safe, welcoming, and fun experience for every camper.

Camp Bonaventure operates at a maximum ratio of 1:4. While our team provides general supervision and program support, Between Friends does not provide 1:1 support or provide personal support aides.



Between Friends **does not** provide personal support aides.

Families are responsible for providing a personal support aide when required; support aides attend Camp at no cost.

Resources  
to Finding a  
Support  
Aide



### Your camper will require a support aide if:

- They require **significant personal care** support
- They **leave the group frequently** by running or wandering away
- They **frequently** require a **lot of time to transition**
- They often express **physical aggression** (pinch, bite, punch, etc.) toward themselves or others
- They require the following **medications/medical assistance**:
  - Injections (excluding EpiPens),
  - Nebulizers,
  - Any medication or device **inserted** into the rectum, vagina, or penis.

### During Camp:

If a camper requires 1:1 support beyond what our staff can provide, families will be required to arrange a personal support aide. This decision will be made by the Program Team, based on the considerations outlined above.



Campers may not attend until appropriate support is in place.

We strongly recommend arranging support in advance if you believe your camper will be more successful with a personal aide.

### Questions about extra support?



403-269-9133



info@betweenfriends.ab.ca



Monday - Friday  
9:00 AM - 4:00 PM



# FAQ

## Camp Bonaventure



### Can I register for just 1 week of camp?

No – Camp sessions are intended to be attended in full (two weeks), as this structure helps campers build meaningful relationships and settle into the program. If your family has unique scheduling needs, we encourage you to contact us—we're always happy to discuss options and work with you where possible.

### Will I need to send snacks and lunch for my camper?

Yes! – Campers must bring their own lunch and snacks each day, unless otherwise noted on their schedule for a special event.

Camp Bonaventure is a nut-free environment. Please ensure all food is nut-free. Microwaves and food-heating options are not available.

### Do you offer Before and After Care?

No – At this time, Camp Bonaventure does not offer Before or After Care for any age group. If this is a concern, please reach out, we'd be happy to explore options with you!

### How and when will I receive details about camp?

**2 Weeks Before** – You will receive an email approximately two weeks before your camper's session begins. This will include the camp schedule, daily packing list, any required activity consent forms, and other helpful reminders.

### More Questions?



403-269-9133



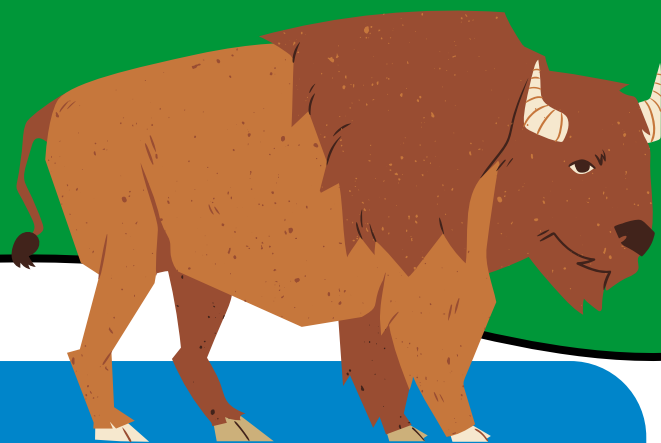
info@betweenfriends.ab.ca



Monday - Friday  
9:00 AM - 4:00 PM

# Checklist

## Preparing for Camp



### Before Registering For Camp:

- ☐ Get your 2026 Membership
- ☐ Check your FSCD contract to make sure you know what they will cover for your camper(s)
- ☐ Need additional financial support? Apply for our Fee Assistance program (see page 5)

### Registering For Camp:

- ☐ Pick the site and the session(s) that you want to attend (maximum 2 sessions per site)
- ☐ Have your payment ready to go (note: if applying for Fee Assistance and/or making a payment plan, you will be asked to provide a \$50 deposit)
- ☐ Register online or by phone. Registration opens February 4, 2026 at 5:30 PM
- ☐ Confirm registration with FSCD - Send them the registration confirmation that you receive after registering

### Before Camp Begins:

- ☐ Consider the support needs of your camper
  - ☐ Will a 1:4 ratio allow them to be successful?
  - ☐ Do they need additional support?
  - ☐ Do I have someone who can support them at Camp?
- ☐ Fill out the pre-program questionnaire that will be sent to you close to Camp time
- ☐ Optional: Attend the Caregiver Information Night at Camp (more details to come)

**We Are So  
Excited to  
See You at  
Camp!**

# Ways You Can Give

Between Friends is where people with disabilities can feel connected, empowered, and have meaningful experiences through social and recreational programming. Consider giving today and help Between Friends continue to be a place where our participants can connect, grow and belong.

**Visit:** <https://betweenfriends.ab.ca/ways-to-give/>

Click the  
circles to  
learn more!



Build a Friends  
in Motion  
Team

Financial  
Contribution

Legacy  
Giving

Volunteer  
With Us

Sponsor an  
Event

Host a  
Fundraiser

Skip the  
Depot



# Important Dates



## FEBRUARY

February 4	<b>Camp Bonaventure Registration @ 5:30 PM</b> <ul style="list-style-type: none"><li>Note - phone line registration option will be open from 5:30 - 6:30 PM</li></ul>
------------	---

## JUNE

June 23	South Site Caregiver Information Night - more info coming soon!
June 24	Sandy Beach Site Caregiver Information Night -more info coming soon!
June 25	North Site Caregiver Information Night - more info coming soon!
June 29	First Day of <b>Camp Bonaventure</b>
June 29 - July 10	<b>Camp Bonaventure Session 1</b> <ul style="list-style-type: none"><li>Note- No Camp Wednesday, July 1</li></ul>

## JULY

July 1	<b>Canada Day - Office Closed, No Programs</b>
July 13 - July 24	<b>Camp Bonaventure Session 2</b>
July 27 - August 7	<b>Camp Bonaventure Session 3</b> <ul style="list-style-type: none"><li>Note - No Camp Monday, August 3</li></ul>

## AUGUST

August 3	<b>Heritage Day - Office Closed, No Programs</b>
August 10 - August 21	<b>Camp Bonaventure Session 4</b>
August 19	Youth Programs - Fall Registration Guide Released
August 13	<b>End of Summer BBQ</b>
August 21	Last Day of <b>Camp Bonaventure</b>
September 2	<b>Fall Program Registration @ 5:30 PM</b> <ul style="list-style-type: none"><li>Note - phone line registration option will be open from 5:30 - 6:30 PM</li></ul>



Main Line  
403-269-9133



info@betweenfriends.ab.ca



Monday - Friday  
9:00 AM - 4:00 PM

## A cartoon illustration of a brown moose with large, orange, palmated antlers. The moose is standing in a white, snowy field. The background is a solid blue sky. The word "JUNE" is written in large, bold, black capital letters in the bottom left corner.

# JUNE

Sun	Mon	Tue	Wed	Thu	Fri	Sat
1	2	3	4 Register for Camp	5	6	7
8	9	10	11	12	13	14
15	16	17	18	19	20	21
22	23	24	25	26	27	28

Sun	Mon	Tue	Wed	Thu	Fri	Sat
31	1	2	3	4	5	6
7	8	9	10	11	12	13
14	15	16	17	18	19	20
21	22	23 South Caregiver Night	24 Sandy Caregiver Night	25 North Caregiver Night	26	27
28	29 Camp Starts	30	1	2	3	4
5	6	7	8	9	10	11

# AUGUST

Sun	Mon	Tue	Wed	Thu	Fri	Sat
29	30	31	1 No Camp	2	3	4
5	6	7	8	9	10	11
← Session One →						
12	13	14	15	16	17	18
← Session Two →						
19	20	21	22	23	24	25
← Session Two →						
26	27	28	29	30	31	1
← Session Three →						
2	3	4	5	6	7	8

Sun	Mon	Tue	Wed	Thu	Fri	Sat
26	27	28	29	30	31	1
2	3 No Camp	4	5	6	7	8
9	10	11	12	13 Summer BBQ	14	15
16	17	18 Fall Guide Out	19	20	21 Camp Ends	22
23	24	25	26	27	28	29
30	31	1 Register Fall	2	3	4	5